

# FULDS

The Eternithaus - an architectural masterpiece in Tiergarten Berlin.  
A place for dinners, parties, product presentations, meetings and more.

**Eternithaus**  
p. 2

**Glas block room**  
p. 6

**Apartments**  
p. 10

**Bar, Entrance, Kitchen**  
p. 17

**Terrace, Garden, Parking**  
p. 20

**Hosts**  
p. 23

**Prices**  
p. 24

# ETERNITHAUS HANSAVIERTEL BERLIN

In 1957, Paul Baumgarten's Eternithaus was built in the Hansaviertel district of Berlin as part of the International Building Exhibition. This district is now a historical monument and many architecture enthusiasts from all over the world visit the houses.

The Eternithaus was one of the most unusual and interesting proposals for new forms of housing. Paul Baumgarten considered the construction of seven terraced houses with private gardens in the immediate vicinity of the Tiergarten to be inappropriate. As an alternative, he created an elongated structure with huge glass windows floating above the ground floor, complemented by a pergola on the first floor, a ship-like railing and cabin-like living spaces.

**Location**

Hansaviertel, Berlin

**Architect**

Paul Baumgarten

**Object name**

Interbau Object No. 25

**Construction Type**

Steel Construction,  
Partition Wall Construction

**Built**

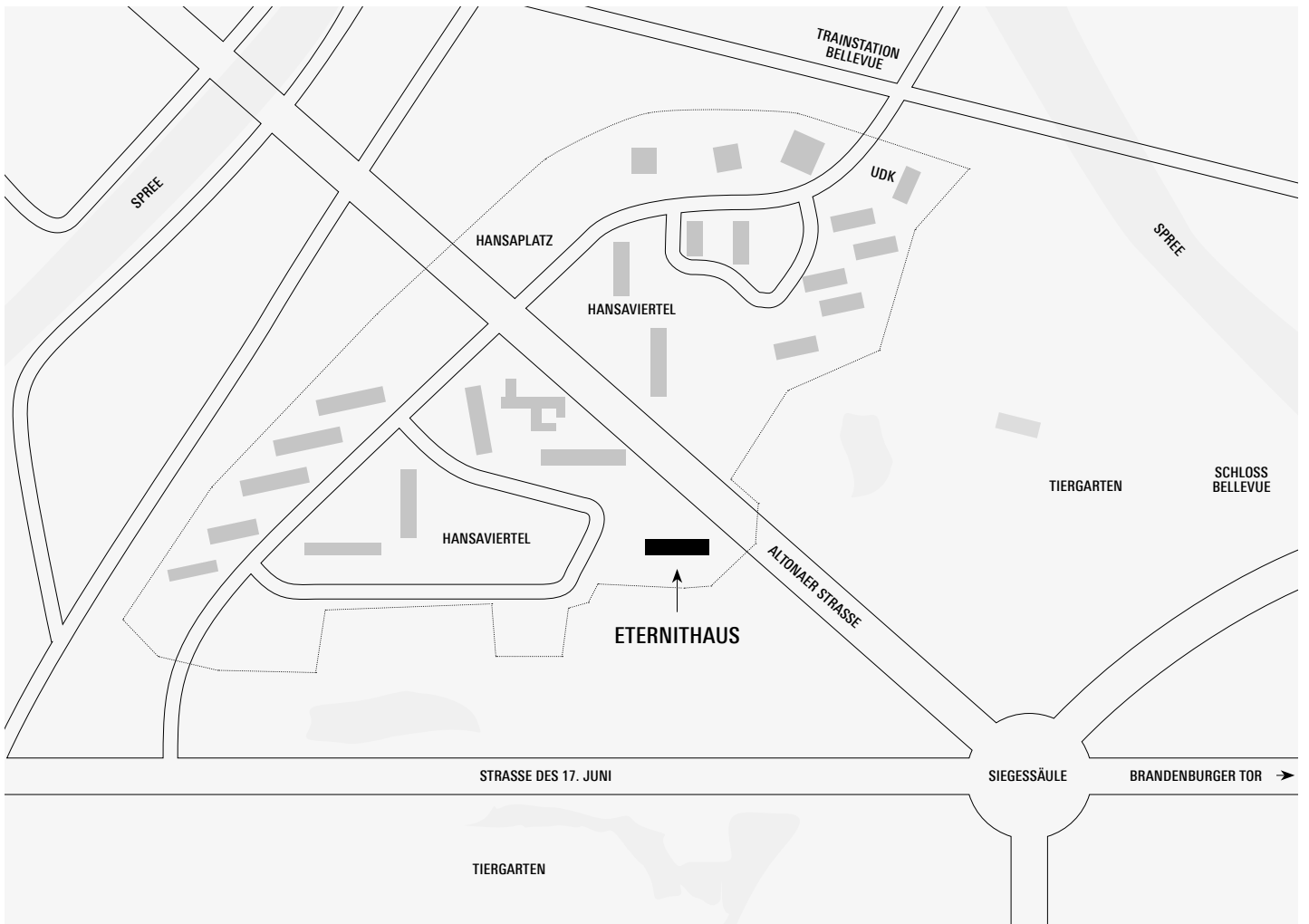
1957



The Eternithaus is 55 meters long and houses open-plan offices on the first floor and seven apartments above, each measuring 92 square meters. The glass block room on the ground floor and two of the seven maisonette apartments can be booked for special occasions.



The details of the Eternithaus are all still in their original condition.



**Location plan**

Eternithaus, Hansaviertel, Altonaer Straße 1, 10557 Berlin

# GLASS BLOCK ROOM

The large glass block room on the ground floor of the Eternithaus offers an unusual and beautiful atmosphere for various occasions: lectures, training sessions and meetings, joyful dinners, but also cheerful parties, exclusive product presentations, masterclasses, and photoshoots. The furniture includes a large mid-century dining table for twelve people and a 4.5-meter-long sofa. Upon request, all furniture can also be removed.

#### **Furniture**

Table for twelve people, 4.5-meter-long sofa, flipchart, various mid-century furniture like long chair, floor lamps and sideboard

#### **Power supply**

18 Schuko power outlets, one 16 and one 32 CEE outlet, nine network connections

#### **IT, HiFi**

Wifi, screens / monitors, sound (JBL, Sonos)



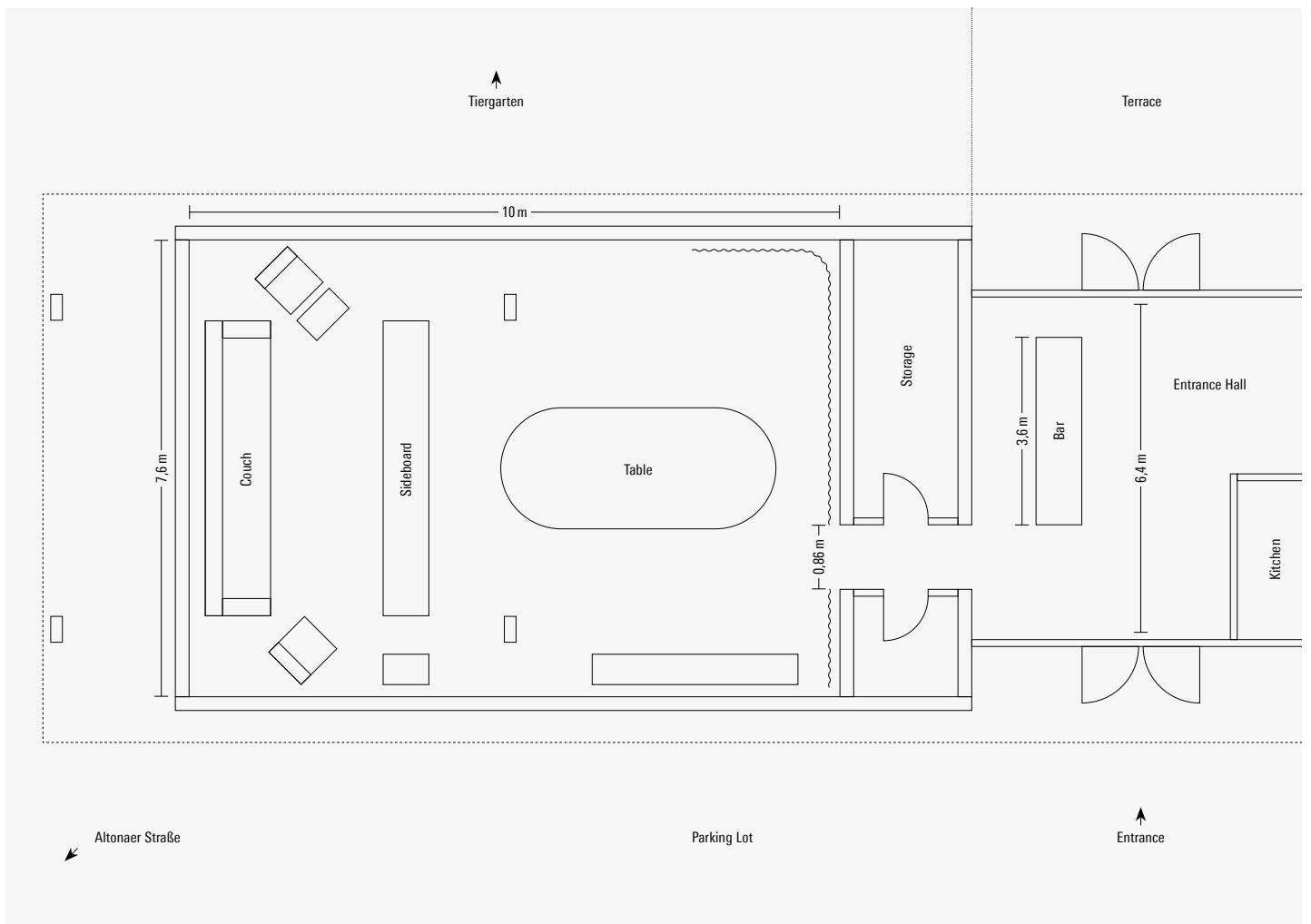
The glass block room on the ground floor has a special atmosphere due to the filtered light that shines in from the outside on three sides.



The large rosewood table from the 1960s offers seating for twelve people.







**Ground floor**

Glass block room 76 m<sup>2</sup>

Bar / Entrance 40 m<sup>2</sup>

Three restrooms with sinks

**Outdoor area**

Terrace 80 m<sup>2</sup> with direct access to the Tiergarten

34 parking spaces

# APARTMENTS NUMBER 3 AND 6

Two of the seven apartments can be used for meetings, coaching sessions, but also for small dinners of two to six people. Up to 20 guests can be invited to a cocktail reception. Both apartments also both have a terrace, which are partially under a roof.

#### **Furniture**

Large table for six people, various mid-century furniture, floor lamps, and sideboards

#### **Kitchen equipment**

Refrigerator with freezer, dishwasher, sink, kettle, tea, Bialetti, French press, coffee, water bottles, dishes, cutlery, pots, kitchen utensils

#### **Bathroom**

Toilet, sink, shower

#### **Power supply**

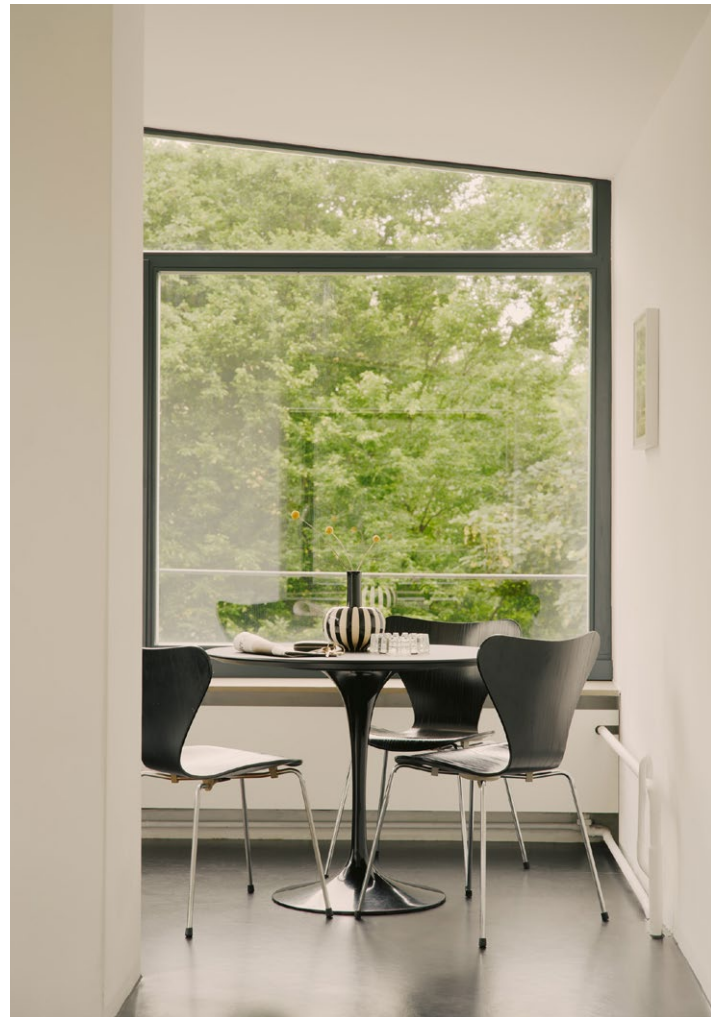
Six Schuko outlets in the kitchen, eight Schuko outlets in the middle room, five Schuko outlets, and one network connection in the large room

#### **IT, HiFi**

Wifi, screens / monitors, sound (JBL, Sonos)



The apartments are wonderful places for small, fine dinners or cocktail invitations. The view of the Tiergarten is unique – old, large trees everywhere and beautiful views into the Hansaviertel.



The kitchen is fully equipped for a dinner for two, for six, or a flying dinner for ten people and more.



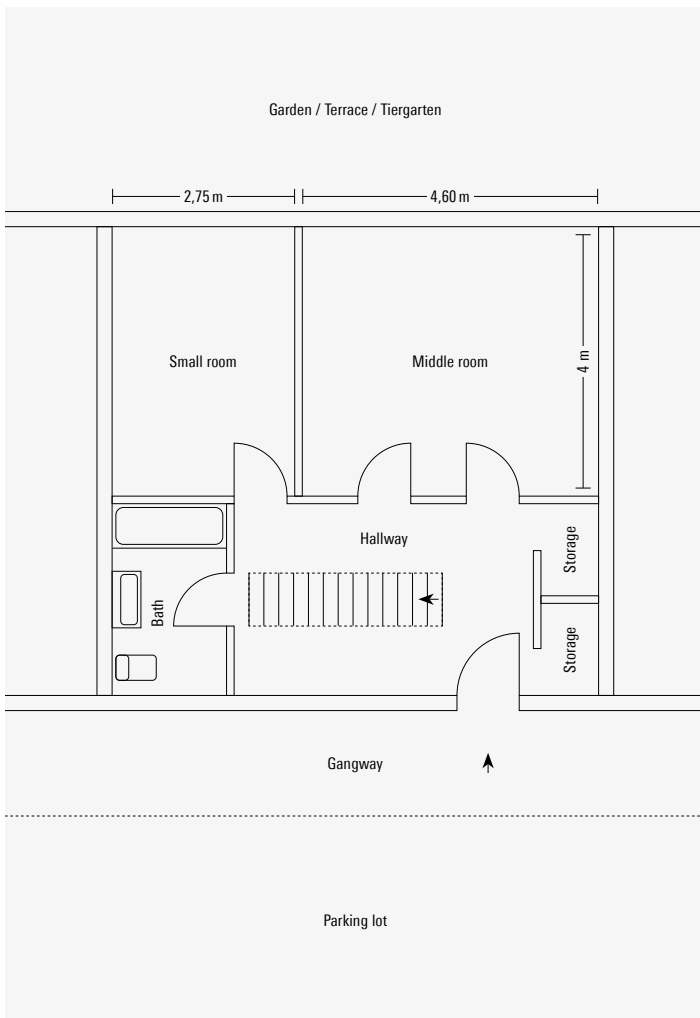
The apartments are wonderful retreats for meetings, coaching sessions, training sessions, and other professional or private occasions.



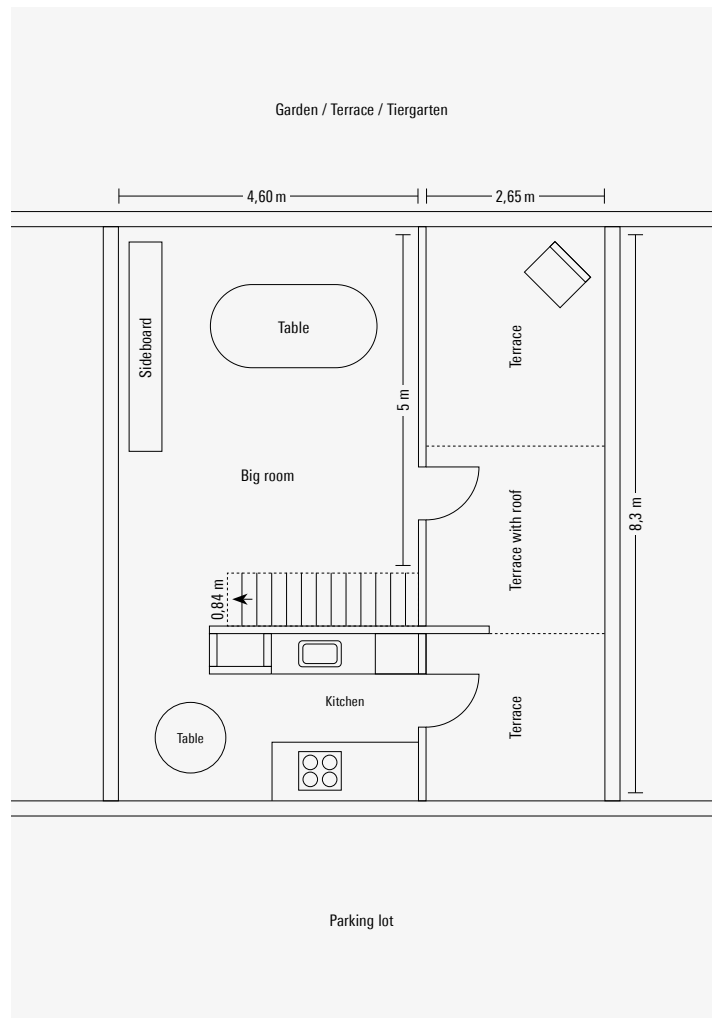
The middle room is perfect for small meetings, an aperitif before dinner, or people who want to retreat for a day to think and work in peace. They can also be used as exclusive fitting rooms.



The partially roofed terraces on the second floor of the apartments are furnished and have a direct view of the Tiergarten.



**First floor maisonette apartment**  
 Middle room 18,4 m<sup>2</sup>  
 Small room 10 m<sup>2</sup>



**Second floor maisonette apartment**  
 Big room 35 m<sup>2</sup>  
 Terrace 22 m<sup>2</sup>



# BAR ENTRANCE KITCHEN

The bar in the Eternithaus, with a large terrace and direct access to the Tiergarten, is a fabulous place for cocktail receptions or flying dinners. It can accommodate from 2 up to 200 people.

## **Bar equipment**

Refrigerator with freezer, bottle refrigerator, dishwasher, sink, kettle, tea, portafilter coffee machine, coffee, Brita water dispenser

## **Kitchen equipment**

Refrigerator with freezer, dishwasher, sink, microwave

## **Restrooms**

Three toilets with sinks

## **Power Supply**

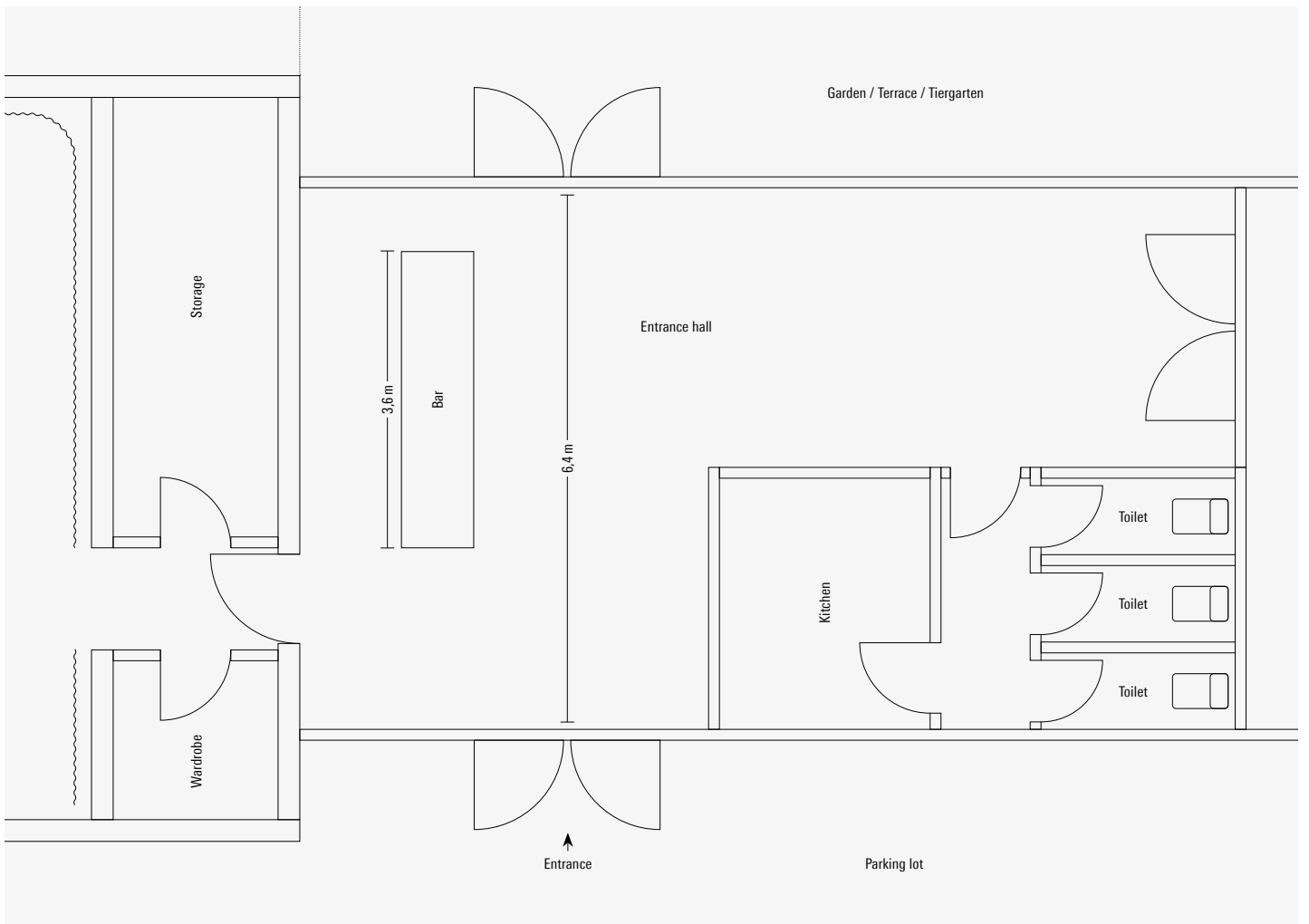
Eight Schuko power outlets and five network connections in the bar area, distributors and extensions available.

## **IT, HiFi**

Wifi, screens / monitors, sound (JBL, Sonos)



The bar is the center of the Eternithaus and also the entrance for all visitors.



Entrance / Bar 40 m<sup>2</sup>

# TERRACE GARDEN PARKING LOT

The Eternithaus is a freestanding building in the middle of Berlin's Tiergarten. It has its own large parking lot and a terrace that directly transitions into the Tiergarten.

## **Terrace furniture**

Two tables, twelve chairs, two large sun umbrellas, a kitchen block with oven and induction, a large gas grill

## **Parking**

34 parking spaces, one flagpole

## **Power supply**

One 16 CEE outlet and one 32 CEE outlet on the terrace, one 16 CEE outlet at the parking lot



The freestanding Eternithaus has a spacious parking lot for 34 vehicles.



The back of the building has a large terrace in the middle of the Berlin Tiergarten.

# HOME OF HEDONISTIC HOSPITALITY

The Fulds is run by people who are passionate hosts, love people, always pay attention to details, enjoy good food and parties, and take great pleasure in staging beautiful spaces. You are welcome to come and visit at any time. A short notice is enough.

If you are interested in booking, please feel free to contact us at any time.

#### **Location Management**

Seraina van der Scheer  
seraina@fulds.berlin  
mob. +49 151 40186589

**Fulds Hedonistic Hospitality**  
Eternithaus, Hansaviertel  
Altonaer Str. 1, 10557 Berlin  
[www.fulds.berlin](http://www.fulds.berlin)

The Fulds is a brand of  
Fuldwerk GmbH.

# PRICES

All prices on request.

**Location Management**  
Seraina van der Scheer  
seraina@fulds.berlin  
mob. +49 151 40186589

**Fulds Hedonistic Hospitality**  
Eternithaus, Hansaviertel  
Altonaer Str. 1, 10557 Berlin  
www.fulds.berlin

The Fulds is a brand of  
Fuldwerk GmbH.